

## Girls Required Items 3K, 4K, 5K



### White Tulane Blouse

#942	4-16	Girls	\$18.50
#943	30-48	Misses	\$20.50

### NEW Plaid Jumper

#30394	2-16	Girls	\$39.95
#30395	4-/18-	Half Sz	\$41.95

### Plaid Jumper

**\*\*Available while supplies last\*\***

#3008	2-16	Girls	\$39.95
#3010	4-/18-	Half Sz	\$41.95

### Khaki Pull-On Pants

#60420	0-12	Pull-On	\$27.25
--------	------	---------	---------

### Khaki Pull-On Shorts

#63430	0-12	Pull-On	\$20.50
--------	------	---------	---------



## Girls Required Items 1<sup>st</sup> - 4<sup>th</sup>



### White Tulane Blouse

#942	4-16	Girls	\$18.50
#943	30-48	Misses	\$20.50

### NEW Plaid Jumper

#30394	2-16	Girls	\$39.95
#30395	4-/18-	Half Sz	\$41.95

### Plaid Jumper

**CLEARANCE**

#3008	2-16	Girls	\$39.95
#3010	4-/18-	Half Sz	\$41.95

### Khaki Pleated Shorts

#72528	3-7	Girls	\$22.50
#72529	7-16	Girls	\$25.50
#535	7-16	Slim	\$25.50
#506	6-/18-	Half Sz	\$29.75
#505	3-27	Junior	\$28.75



## Girls Required Items 5<sup>th</sup> - 8<sup>th</sup>



### White Sailor Middy Blouse w/ Fiberlock Logo

#10373	1T-16	Girls	\$33.25
#10374	6-/18-	Half Sz	\$35.25
#10375	30-44	Misses	\$35.25

### Plaid Tie

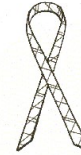
#9451	T		\$10.75
-------	---	--	---------

### Plaid Skirt

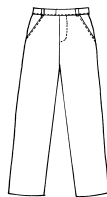
#4130	22-50	Misses	\$41.95
#1247	22-50	Misses	\$58.25

### Khaki Pleated Shorts

#72528	3-7	Girls	\$22.50
#72529	7-16	Girls	\$25.50
#535	7-16	Slim	\$25.50
#506	6-/18-	Half Sz	\$29.75
#505	3-27	Junior	\$28.75



## Girls Optional Items 5<sup>th</sup> - 8<sup>th</sup>



### Navy Flat Front Slacks

#7114	3-6X	Girls	\$32.75
#7115	7-16	Girls	\$32.75
#7116	7-16	Slim	\$32.75
#7117	6-/18-	Half Sz	\$35.75
#70008	00-27	Junior	\$35.75

## Girls Optional Items 1<sup>st</sup> - 8<sup>th</sup>

### White SS Overblouse

#2073	2T-16	Girls	\$26.50
#2074	30-48	Misses	\$28.75



## Boys Required Items 3K, 4K, 5K



### Wine SS Jersey with Fiberlock Logo

#28046	XXS-XL Youth	\$25.25
#28047	S-3XL Adult	\$28.25

### Khaki Pull-On Shorts

#63430	0-12	Pull-On	\$20.50
--------	------	---------	---------

### Khaki Pull-On Pants

#60430	0-12	Pull-On	\$27.25
--------	------	---------	---------



## Boys Required Items 1<sup>st</sup> - 8<sup>th</sup>



### Wine SS Jersey with Fiberlock Logo

#28046	XXS-XL Youth	\$25.25
#28047	S-3XL Adult	\$28.25

### White Fiberlocked Oxford Required on Dress Day

#### Short Sleeve

#32806	4-20	Boys	\$27.25
#32807	8-20	Husky	\$29.25
#32808	S-3XL	Men's	\$30.25

### White Fiberlocked Oxford Optional

#### Long Sleeve

#32879	4-20	Boys	\$30.00
#32900	8-20	Husky	\$32.25
#32880	S-3XL	Men's	\$33.25

### Wine Tie

#9065	10-15	Adjust.	\$13.25
#63	T	Mens	\$14.25

### Khaki Pleated Pants

#60040	3-7	w/elastic	\$30.25
#60050	3-7	Slim	\$30.25
#60060	8-20	Boys	\$33.25
#60070	8-20	Slim	\$33.25
#60080	25-38	Husky	\$37.75
#60090	30-48	Men's	\$39.25
#60061	30-40	30" L	\$39.25
#60062	30-40	32" L	\$39.25

\*\*\*Men's pants are unhemmed\*\*\*

